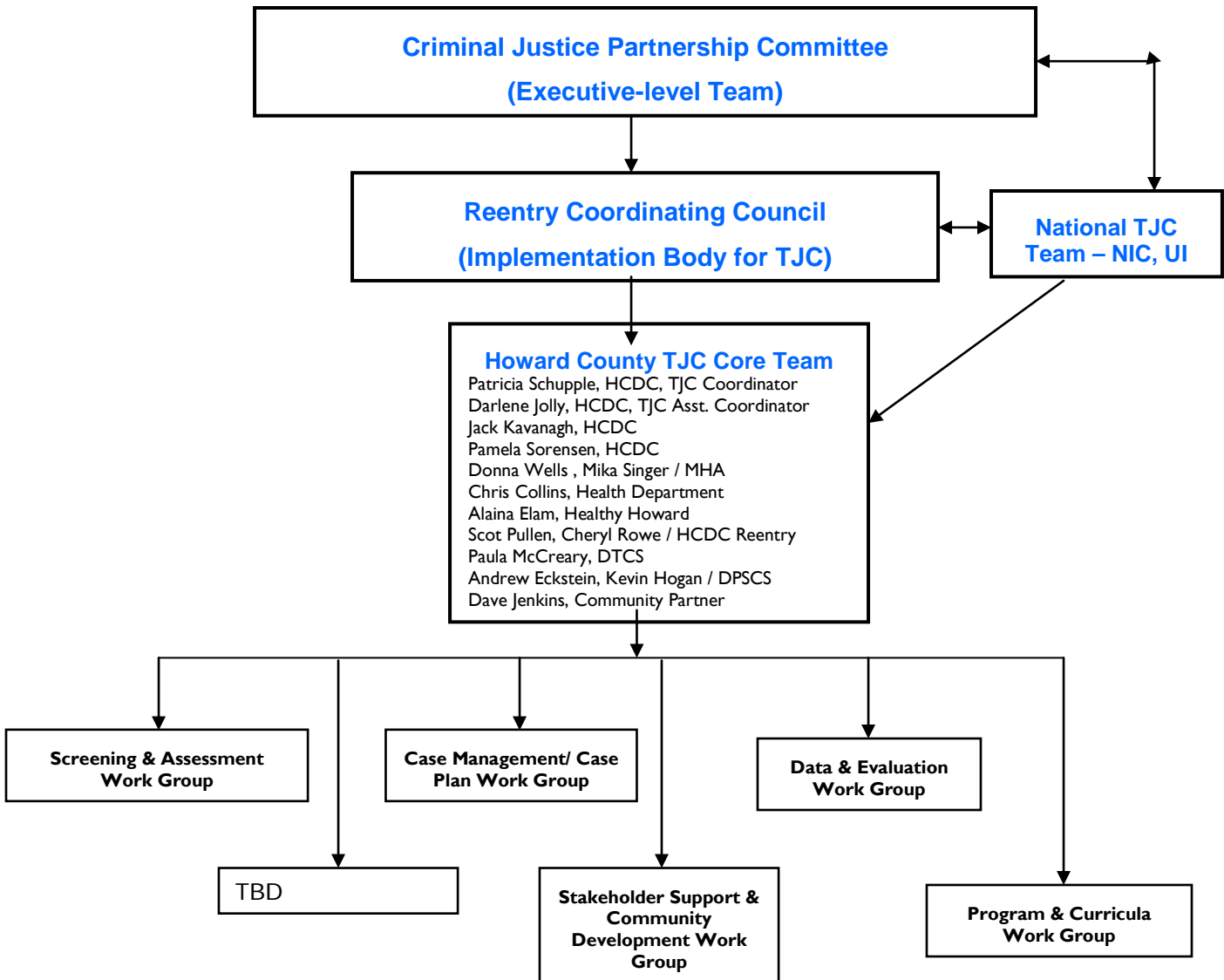


Howard County, Maryland
TJC Organizational Structure
11.11.2013



**Howard County, Maryland
TJC Organizational Structure
11.11.2013**

CRIMINAL JUSTICE PARTNERSHIP COMMITTEE

Roles and Objectives

- Meet quarterly
- Champion the initiative within the justice agencies and the community
- Vehicle for community-wide communication
- Hold initiative accountable for meeting performance metrics
- Set policy and guide the Howard County TJC initiative

Members

Donna Wells (co-chair), Executive Director, Mental Health Authority (MHA)
Jack Kavanagh (co-chair), Director, Howard County Department of Corrections (HCDC)
Trish Schupple, HCDC
Darlene Jolly, HCDC
Mika Singer, MHA
Debra Hammen, DHMH Office of Forensic Services
Dale Maselli, Dept of Public Safety & Community Supervision (DPSCS)
Sandra Esworthy, DPSCS
Chief William McMahan, Howard County Police
Donelda Stayton, NAMI Howard County
Paula Langmead, Springfield Hospital Center
Dario Broccolino, State's Attorney Office
Dudley Greer, Health Department, Substance Abuse
Lois Mikkila, Dept of Citizen Services
Carol Hanson / Robert Ehrhardt, Office of the Public Defender
The Honorable Lenore Gelfman
The Honorable Mary Reese
Julie Cleveland, Consumer advocate

REENTRY COORDINATING COUNCIL

Roles and Objectives

- Meet every 2 months
- Develop and/or strengthen partnerships with community agencies

Invitees

Andrea Ingram, Grassroots Crisis Intervention Center
Carol Hanson / Robert Ehrhardt, Office of the Public Defender
Chief William McMahan / Major Gary Gardner, Howard County Police
Claudia Salomon / Chris Collins, Howard County Health Dept
Darren McGregor, DHMH
Donna Wells / Mika Singer / Janet Jones, MHA
Andrew Eckstein / Kevin Hogan / Dale Maselli, DPSCS
Yasmin Viera / Alaina Elam, Healthy Howard
Chaplain Washington / Dale Pace, Christian Jail Ministries (CJM)
H. David Jenkins, Community Representative/Consultant
Jack Kavanagh, HCDC
Trish Schupple, HCDC
Pamela Sorensen, HCDC
Darlene Jolly, HCDC
Scot Pullen / Cheryl Rowe, HCDC
Paula McCreary, Dept of Technology & Communication Services (DTCS)
Francine Trout, Mid-Maryland Workforce Investment Area
Lois Mikkila / Erica Lewis / Quinton Askew, Dept of Citizen Services
Debbie Popiel, ACS

**Howard County, Maryland
TJC Organizational Structure
11.11.2013**

Karen Butler / Inyang Joy Etukudo, Dept of Social Services
Thomas Carbo / Shirelle Bennett / Tiffany Smith, Howard County Housing
Ayman Nassar, Islamic Leadership Institute of America
Debbie Anderson, On Our Own of Howard County, Inc.
Karen Booth / Jesse Guercio, Humanim Inc.
Beverly Francis-Gibson / Steve Gray / Donelda Stayton, NAMI
Sheila Little, Office of Workforce Development
Jennifer Corcoran, Alliance Inc.
Kathy Rockefeller / Maria Harrison, Mediation & Conflict Resolution Center

CONSULTANTS

DPSCS Headquarters Team

- Jon Galley, Executive Regional Director, North Region
- Cynthia Holley, Director of Case Management
- Chevette Hensen, Chief of Case Management
- Mike Lichtenberg, Executive Assistant

National TJC Team

- Jesse Janetta, Urban Institute
- Deborah Mayer, Urban Institute
- Kuniko Madden, Urban Institute
- Patricia Taylor, NIC

HOWARD COUNTY CORE TEAM

Roles and Responsibilities

- Coordinate with the national TJC technical assistance team
- Guide the day to day ground level initiative development, along with the work groups
- Review progress of the work groups and align resources and efforts to accomplish goals and objectives

Members

Patricia Schupple, HCDC, TJC Coordinator
Darlene Jolly, HCDC, TJC Asst. Coordinator
Jack Kavanagh, HCDC
Pamela Sorensen, HCDC
Donna Wells / Mika Singer, MHA
Chris Collins, Health Department
Alaina Elam, Healthy Howard
Scot Pullen / Cheryl Rowe, HCDC Reentry
Paula McCreary, DTCS
Andrew Eckstein / Kevin Hogan, DPSCS
Dave Jenkins, Community Partner

**Howard County, Maryland
TJC Organizational Structure
11.11.2013**

TJC WORK GROUPS

Responsibilities

- Task specific charters delegated by the Reentry Coordinating Council and/or the CORE Team

Screening and Assessment

Members

- Pam Sorensen, Chair, HCDC
- Andre McInnis, Co-chair, HCDC
- Darlene Jolly, HCDC
- Mary Colliver, HCDC
- Niccole Branch, HCDC

Consultants

- Jack Kavanagh, HCDC
- Trish Schupple, HCDC
- Alaina Elam, Healthy Howard
- Mika Singer, MHA
- Paula McCreary, DTCS
- Dave Metz / Diana Pettit, HCDC

Tasks (see action plan)

Case Management/Case Plan

Members

- Pam Sorensen, Chair, HCDC
- Darlene Jolly, Co-chair, HCDC
- Scot Pullen / Cheryl Rowe, HCDC
- Chris Collins, Health Dept
- Donna Wells / Mika Singer, MHA
- Mary Colliver, HCDC
- Andre McInnis, HCDC
- Niccole Branch, HCDC

Consultants

- Andy Eckstein, DPSCS
- Alaina Elam, Healthy Howard
- Dave Jenkins
- Trish Schupple

Tasks (see action plan)

**Howard County, Maryland
TJC Organizational Structure
11.11.2013**

Data and Evaluation

Members

- Darlene Jolly, Chair, HCDC
- Co-chair TBD
- Trish Schupple, HCDC
- Paula McCreary, DTSC
- Diana Pettit, HCDC
- Dave Metz, HCDC
- Pam Sorensen, HCDC

Tasks (see action plan)

Program and Curricula

Members (to be developed)

- Trish Schupple, Chair, HCDC
- Darlene Jolly, Co-chair, HCDC
- Chris Collins, Health Dept
- Chaplain Washington / Dale Pace, CJM
- Scot Pullen / Cheryl Rowe, HCDC
- Dave Jenkins
- HCC rep
- Donna Wells / Mika Singer, MHA
- Conmed Rep
- DPSCS rep
- ACS rep

Tasks (See action plan)

- Identify programs and research evidence
- Review program objectives and targeted population
- Identify programs which address at least 4 of the criminogenic factors
- In jail and community based programs
- Complete case flow map to identify service providers and service provider gaps.
- Identify program gaps

Stakeholder Support and Community Development

Members (to be developed)

- Jack Kavanagh, Chair, HCDC
- Donna Wells, Co-chair, MHA
- Dave Jenkins
- Trish Schupple, HCDC
- Scot Pullen, HCDC
- ACS rep
- Grassroots rep
- Healthy Howard rep

Tasks

- To be developed